

Covid-19 Communication

The **safety** of our patients, employees, doctors and community members is our priority.



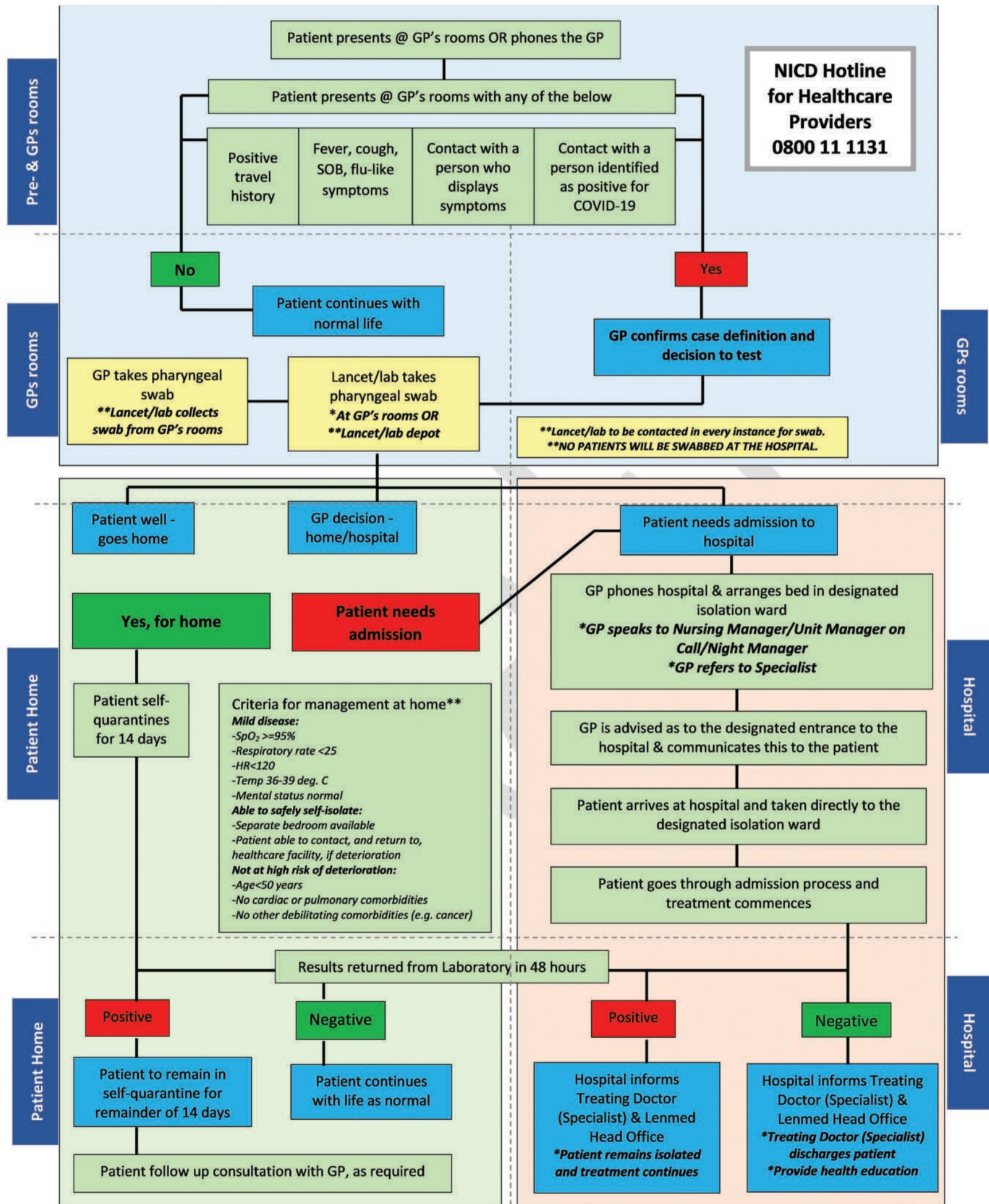
Our staff and facilities are **prepared** for the COVID-19 outbreak.



Our procedures are aligned with the **NICD guidelines**.



LENMED COVID-19 PATIENT PATHWAY



**http://www.nicd.ac.za/wp-content/uploads/2020/03/Clinical_management_of_suspected_or_acute_COVID_V1.1_13.03.20_updated.pdf

The NICD Clinical management of suspected or confirmed COVID-19 disease

**<http://www.nicd.ac.za/wp-content/uploads/2020/03/A0-nCoV-Poster-V1-PU-Feb-2020-G.pdf>

The NICD Process Flow for Healthcare Professionals

NICD HOTLINE FOR PUBLIC: 0800 111 132/0800 029 999 | NICD HOTLINE FOR DOCTORS: 0800 111 131

Contact your local Lenmed Hospital

info@lenmed.co.za | www.lenmed.com

